

Flush lock handle housing OLDA 86 PM



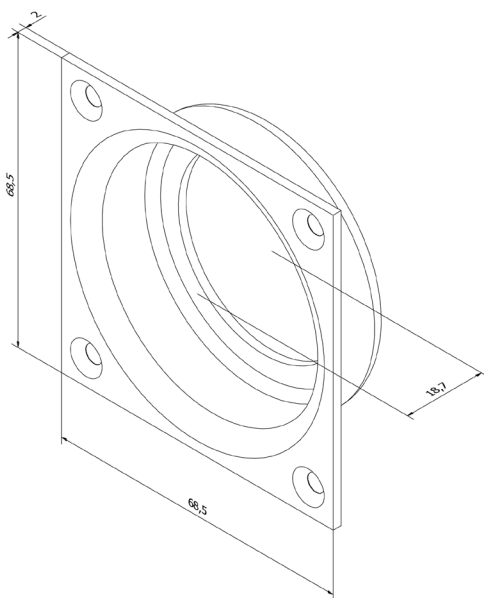
Function:

For recessed fitting in sliding doors.

Fitted on the door leaf side, to hold suitable lock handle.

Features:

The fixing plate has dimensions 68.5 x 68.5 x 2 mm. Manufactured in electrozinc plated steel.



Usage:

Fits either side of the door. Lock handle space is \varnothing 55 mm with a 16 mm depth and an inner hole diameter of 43 mm.

Mainly intended for inner doors.

Installation:

OLDA 86 PM is fitted recessed on the door leaf side. Recommended recess is \varnothing 65 mm with depth of 17 mm.

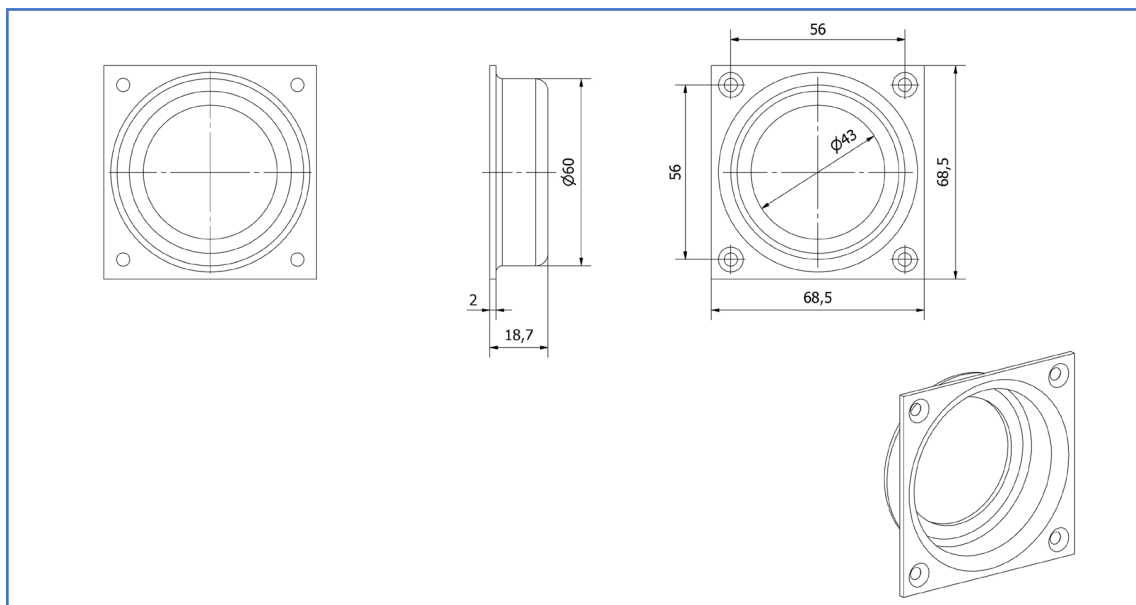
If the entire housing shall be recessed into the door, an additional square recess 68.5 x 68.5 x 2 mm is required, thereby giving a total depth of 19 mm.

The 86 PM lock handle housing is fastened with four countersunk 3.5 x 16 mm screws.

Specification:

- Fixing plate:
 - height: 68.5 mm
 - width: 68.5 mm
 - thickness: 2 mm
- Lock handle space:
 - diameter: 55 mm
 - depth: 16 mm
 - hole diameter: 43 mm
- Total depth (inc. plate): 18.7 mm
- Material: steel
- Coating: electrozinc plating

Flush lock handle housing OLDA 86 PM



Product document:

- [Dimensions](#)

Product models – 2D:

- [PDF](#)
- [DXF](#)
- [DWG](#)

Product models – 3D:

- [STEP](#)
- [DWG](#)
- [PDF – 3D](#)

OLDA product links:

- [Flush housing 86 PM](#)
- [Flush bolt accessories](#)
- [OLDA flush bolts](#)
- [OLDA fittings school](#)