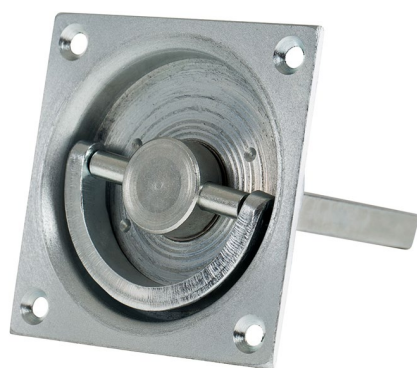


Flush ring handle OLDA 85 PM

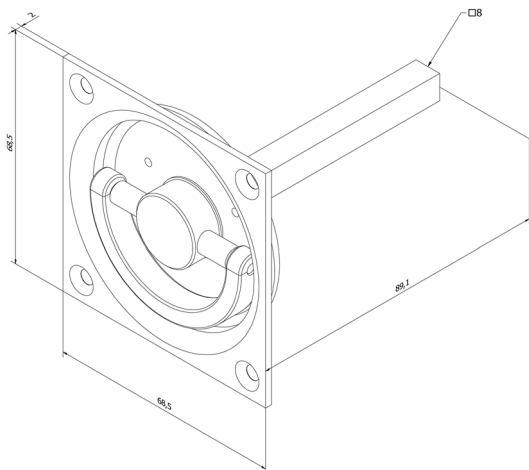


Function:

Recessed fitting in sliding doors. When the ring handle is not in use, the handle rests inside the bowl shaped fixing plate. Fitted on the door leaf side and connects to suitable lock.

Features:

The 68.5 x 68.5 x 2 mm fixing plate has a pre-fitted ring handle and carrier shaft (8 x 8 mm) with a total depth of 89.1 mm.



The flush ring handle is manufactured in electrozinc plated steel.

Usage:

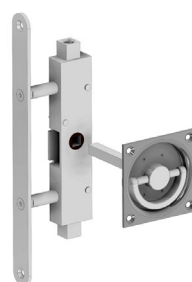
Fits either side of a sliding door. Connects to a suitable lock by cutting the 8x8 mm carrier shaft to length before mounting.

Mainly intended for inner doors.

Installation:

OLDA 85 PM is fitted recessed on the door leaf side. Recommended recesses are Ø 65 x 12 mm, Ø 16 x 20 mm and Ø 12 mm hole adapted to the 8 x 8 mm carrier shaft.

1. Highlight the desired position
2. Make the recess and pre-drill the holes to the four fixing screws
3. Install the ring handle, chosen door lock and tighten all screws
4. Check the function



If the entire handle shall be recessed into the door, a square recess 68.5 x 68.5 x 2 mm is also required.

The ring handle is fastened with four countersunk 3.5 x 16 mm screws.

Specification:

- Fixing plate:
 - height: 68,5 mm
 - width: 68,5 mm
 - thickness: 2 mm
- Carrier shaft:
 - height: 8 mm
 - width: 8 mm
- Total depth (incl. plate): 89.1 mm
- Material: steel
- Coating: electrozinc plating

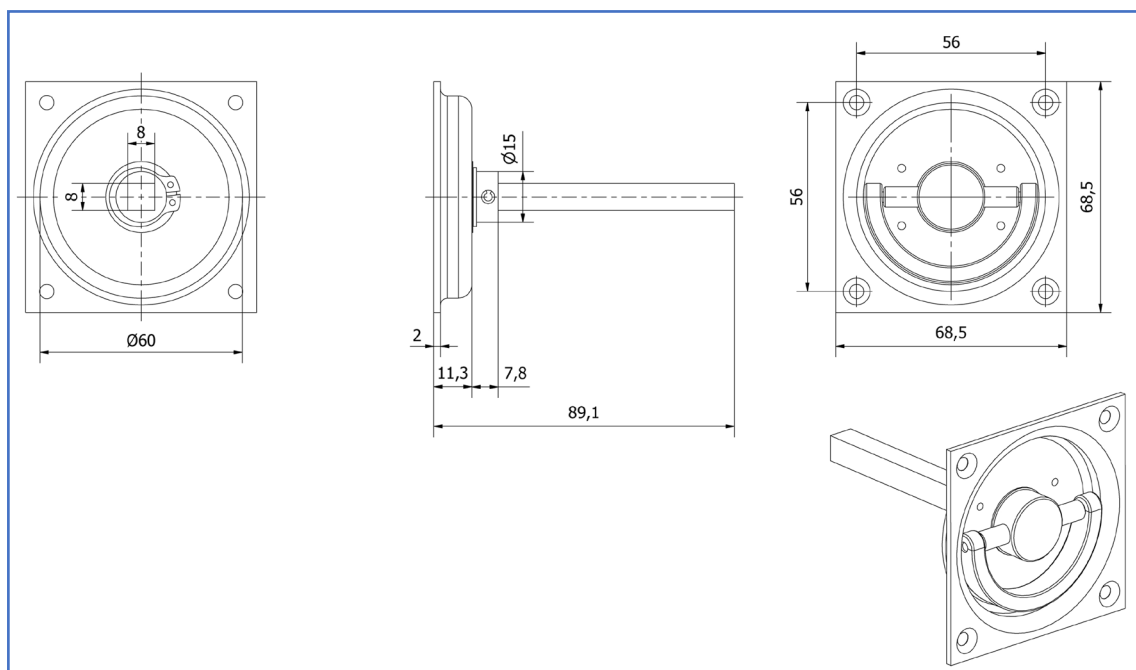
Service:

Function tests are recommended once or twice a year. Test and clean as needed.

Warranty:

All mechanical "OLDA" branded products have a 36-month factory warranty.

Flush ring handle OLDA 85 PM



Product documents:

- [Dimensions](#)
- [Installation](#)

Product models – 2D:

- [PDF](#)
- [DXF](#)
- [DWG](#)

Product models – 3D:

- [STEP](#)
- [DWG](#)
- [PDF – 3D](#)
- [PDF – 3D installation](#)

OLDA product links:

- [Flush ring handle 85 PM](#)
- [Flush bolt accessories](#)
- [OLDA flush bolts](#)
- [OLDA fittings school](#)